

For the Architectural Designer

AI Workflow Guide.

Level up your design workflow with Veras AI & Enscape.



✦ Prompt

Welcome to your AI-powered design journey!

This guide will walk you through leveraging AI within Enscape to **supercharge your creative process**, from early-stage ideation to presentation. Have a go and see for yourself.



Ideation

Generate design directions from simple models and try different looks & moods instantly.



Iteration

Iterate building forms and proportions fast, and visualize designs across different sites and settings.



Design development

Test materials and finishes rapidly while exploring daylight and artificial lighting effects.



Visualization

Produce multiple visual options for comparison, enriched with people, vegetation, and detailed assets.



Presentation

Create engaging animations for presentations and client pitches.



Post-editing

Enhance renders for portfolio-ready output.

With AI, we're seeing teams slash early-stage **design iteration times by up to 70%.**

What used to take a week of manual modeling and rendering can now be explored in a single afternoon.

[How AI is reshaping Architectural Design & Visualization in 2026 Report](#)



Your journey to supercharge your design workflow with AI

Track Your Progress



1. Getting started

It takes 3 seconds

2. Early-Stage Ideation & Iteration

It is all about speed!

Discover a wide range of possibilities without committing to detailed modeling.

a. Generate & Refine Design Options

Explore different massing concepts, facade treatments, and material palettes.

b. Test Facade & Material Options

Visualize different material combinations on your building's exterior.

3. Design Development & Presentation

Refine your chosen design and create compelling visuals that communicate your intent with clarity and style.

a. Create Stylized Views

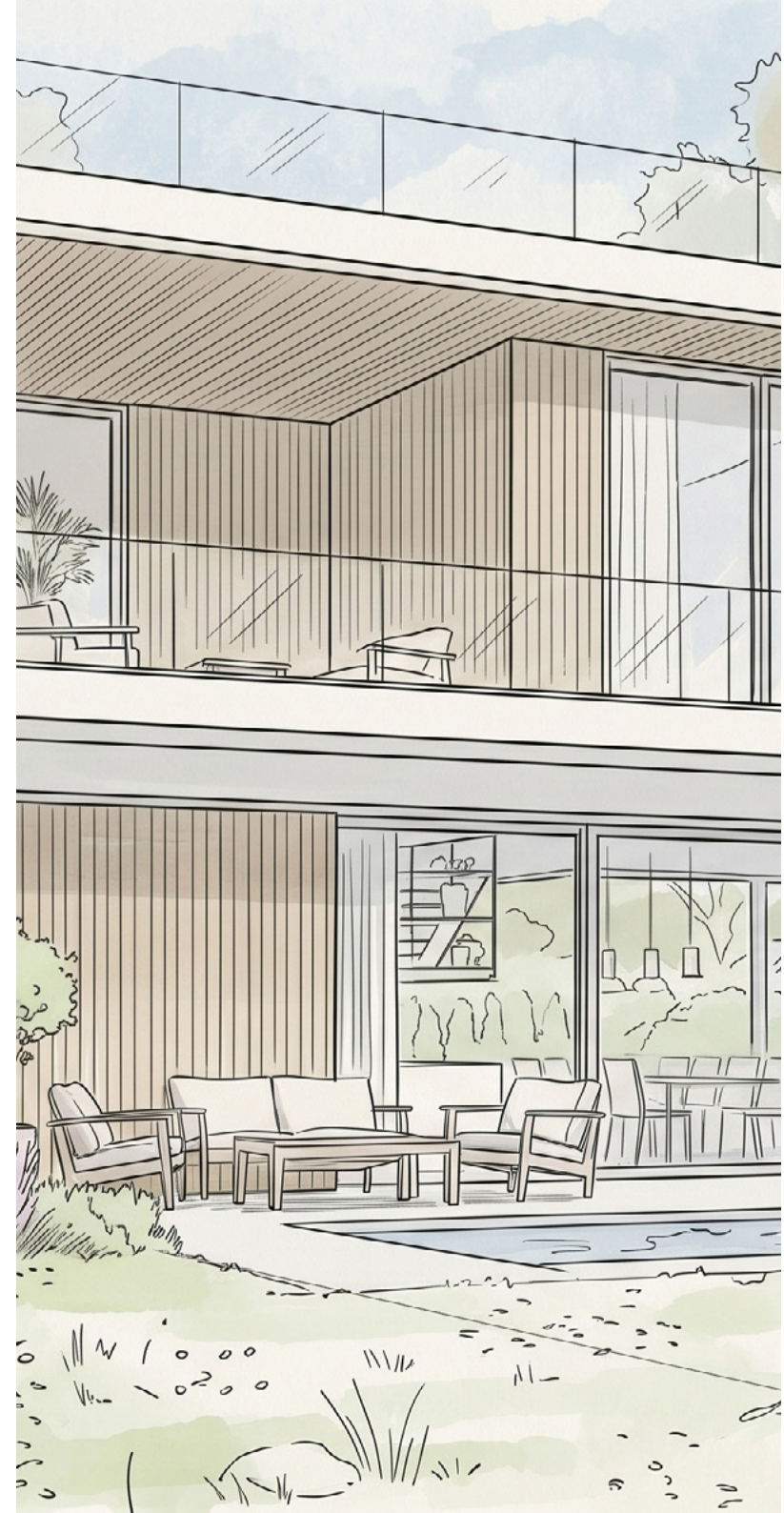
Produce beautiful, artistic visuals perfect for client presentations, competition boards, or internal reviews.

b. Add Context & Entourage

Bring your scene to life by adding realistic people, vegetation, and contextual elements.

c. Image-to-Video

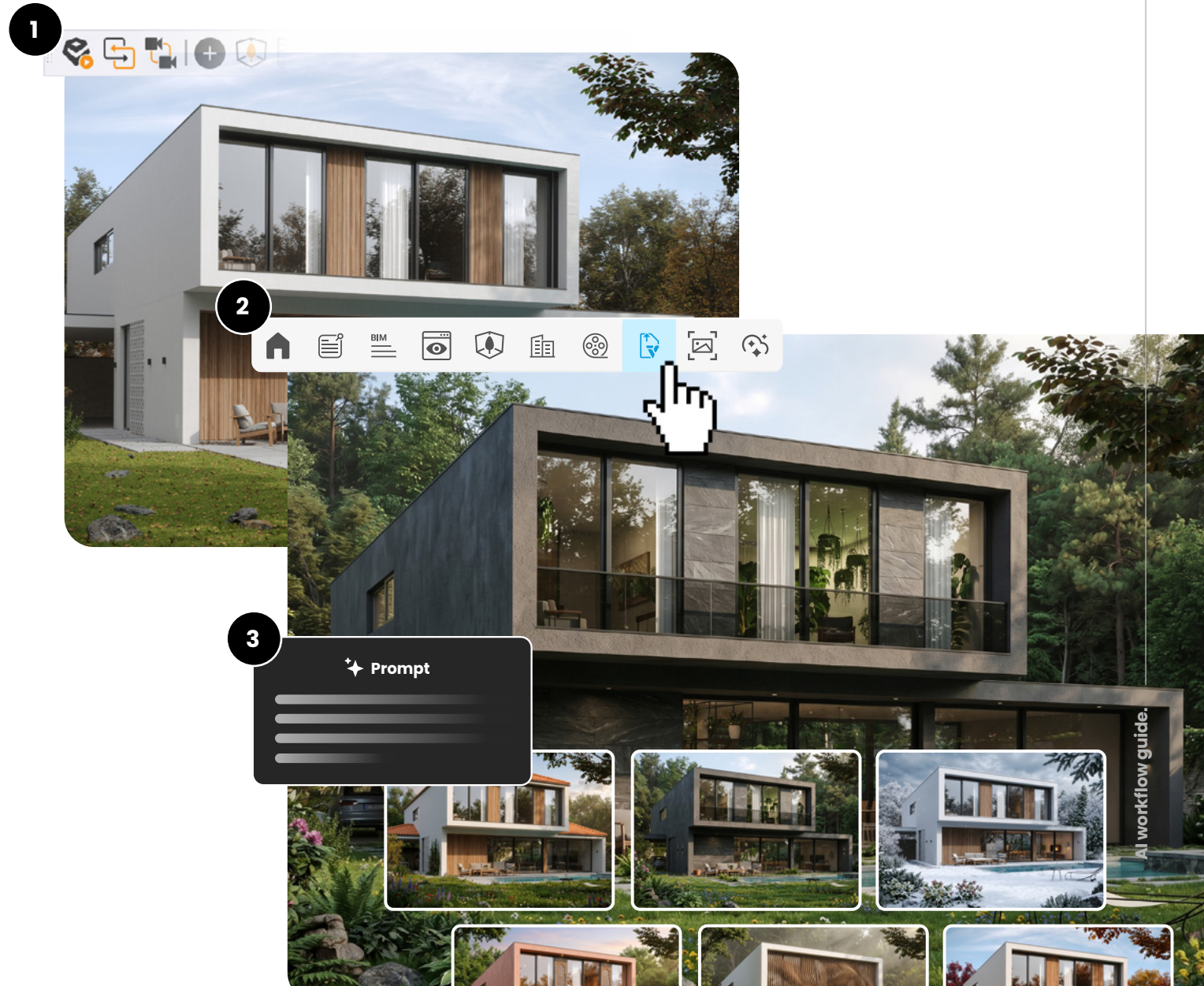
Turn your best renders into short, cinematic animations.



Getting Started: Veras in Enscape

- 1** Open your model in your design application (Revit, SketchUp, etc.).
- 2** Start Enscape.
- 3** Open Veras from the Enscape toolbar.

It's that simple.



Early-Stage Ideation & Iteration

This stage is all about speed and exploring a wide range of possibilities without committing to detailed modeling.

Generate & Refine Design Options

How to do it:

1. Open the **Compose** tab.
2. Select the **Nano Banana** render engine.
3. Write a **simple prompt**, like: *“Modernist residential home, timber cladding, large glass windows, set in a forest.”*
4. Click **Render** and generate multiple options in seconds.
5. Found a direction you like? Refine your prompt and **re-render**.
Example: *“Modernist residential home, brick base, timber upper floor, large glass windows, set in a forest.”*

Pro-Tip: Use the **Render Selection** feature to focus the AI on a specific part of your model, like a facade or roof, for targeted ideation.

3-5 Credits per image



Test Facade & Material Options

Instantly visualize different material combinations on your building's exterior without touching your 3D model.

How to do it:

1. Write a descriptive prompt focused on **materials**.
Example: "Brutalist concrete facade, weathered steel panels, floor-to-ceiling glazing."
Good: white walls, white ceiling, forest seen through large windows
Bad: white room, in a forest
Example: "Warm wooden facade, weathered steel panels, floor-to-ceiling glazing."
2. Click **Render** and confirm the result.
3. Iterate by updating the material keywords in your prompt. **Good:** white walls, white ceiling, forest seen through large windows
Bad: white room, in a forest
Example: "Warm wooden facade, weathered steel panels, floor-to-ceiling glazing."
4. **Re-render** to see variations.

3-5 Credits per image



Design Development & Presentation

Now refine your chosen design and create compelling visuals that communicate your intent with clarity and style.

Create Stylized Views

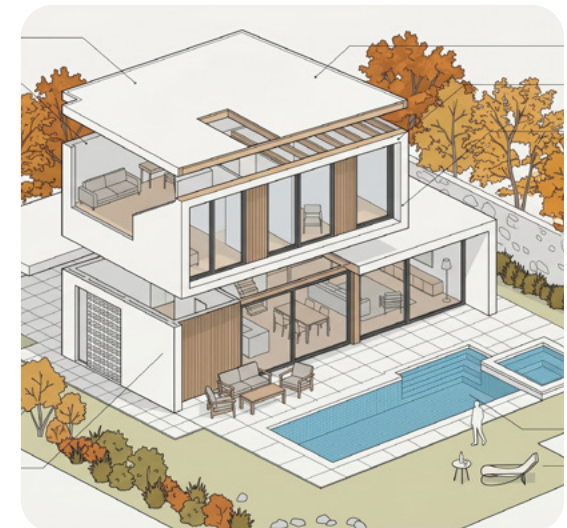
Produce beautiful, artistic visuals perfect for client presentations, competition boards, or internal reviews.

How to do it:

1. Write a **prompt** describing the **artistic style** you want.
Example: “Conceptual sketch style, hand-drawn lines, watercolor wash.” Or: “Axonometric diagram, minimal color palette.”
2. Click Render.

Pro-Tip: Use **Image Reference** to guide your render toward a specific look. Upload up to 4 reference images and set each one as a Style reference — the AI will carry that image’s artistic style, rendering technique, and visual treatment into your output.

9-11 Credits per image



Add Context & Entourage

Finally, bring your scene to life by adding realistic people, vegetation, and contextual elements with a simple text prompt.

How to do it:

1. Describe the **desired atmosphere, time of day, and specific elements** you want to add in your prompt. **Example:** “A sunny afternoon, people walking and talking, lush trees, modern street furniture.”
2. Hit **Render**.

Veras will intelligently place these elements into your scene, respecting perspective and scale.

Pro-Tip: Use **Image Reference** to place specific objects into your scene. Set the reference type to Object, drop in a photo of a chair, light fixture, planter, or any design element, and the AI will incorporate it into your render.

9-11 Credits per image



★ Prompt

Add people in the poolside area sitting on the furniture, swimming in the pool and add a barbeque on the left side with a person cooking on it. Make it sunny.



Image-to-Video Animation

Turn your best Veras images into short, cinematic animations.

How to do it:

1. Select the **Video tab**.
2. Add an image.
3. Write a **prompt** describing your **video preferences**.
Example: *"Panning camera, day turns to night, and interior lights turn on."*
4. Let Veras generate a **short animation**. The video creation process takes a couple of minutes.

Pro-Tip: Use **First & Last Frame mode** to define both the starting and ending frame of your video — the AI generates everything in between. Use this to guide transitions between two design states, walk through a space from entry to exit, or define a camera sweep with precise control over the result.



9-11 Credits per image



chaos

Ready to Redefine Your Workflow?

Now it's your turn! Integrate AI in your workflow and supercharge your design process.

Share Your Creations

Join the community and show us what you've created with Veras AI.

Tag @ChaosEnscape on [LinkedIn](#) or create a project on [CGconnect](#).

Master Your AI Workflow

Go beyond this guide with our free, in-depth Chaos Academy courses.

- ◊ [Enhance your Enscape workflow with Veras for Exteriors.](#)
- ◊ [Enhance your Enscape workflow with Veras for Interiors.](#)

Get More Chaos Credits

Got hooked? Take it to the next level with more AI power within Enscape and **complimentary credits** reach out to your Account Manager.